

# THROTTLE UP!

Alto Sax

Composed and Arranged by  
**CHRIS SHARP (ASCAP)**

Fast swing ♩ = 144

*mf*

17

3



# THROTTLE UP!

Tenor Sax

Composed and Arranged by  
**CHRIS SHARP** (ASCAP)

Fast swing  $\text{♩} = 144$



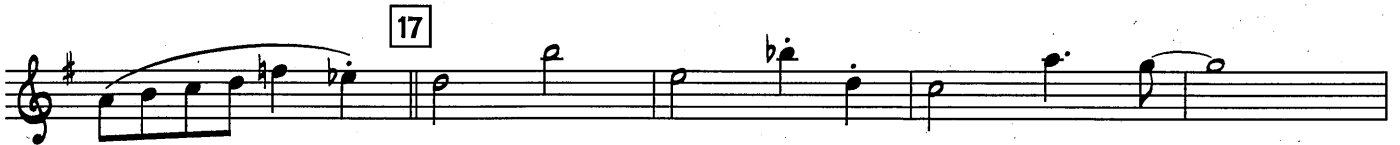


# THROTTLE UP!

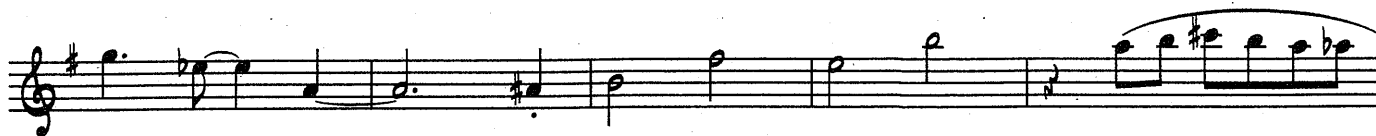
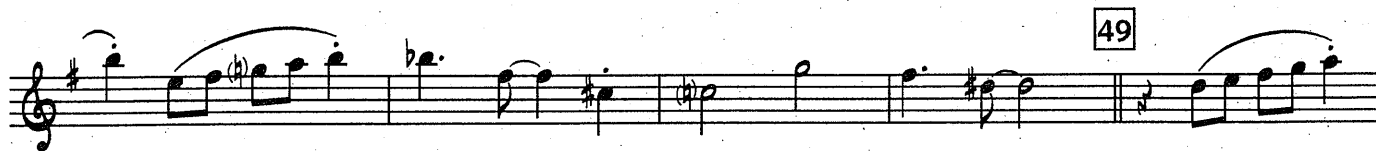
## Baritone Sax

Composed and Arranged by  
**CHRIS SHARP** (ASCAP)

Fast swing  $\text{♩} = 144$



THROTTLE UP!...p. 2 Baritone Sax



# THROTTLE UP!

Composed and Arranged by  
**CHRIS SHARP** (ASCAP)

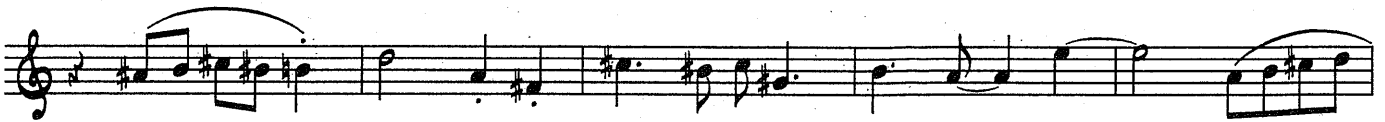
Trumpet

Fast swing  $\text{♩} = 144$

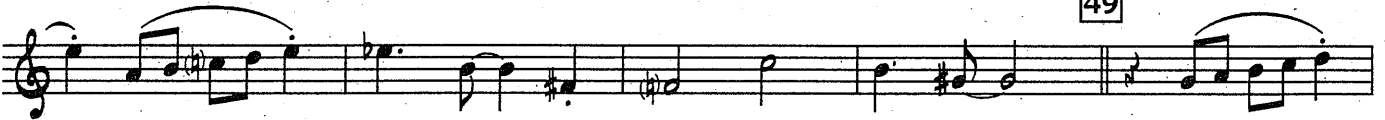


THROTTLE UP!...p. 2 Trumpet

33



49



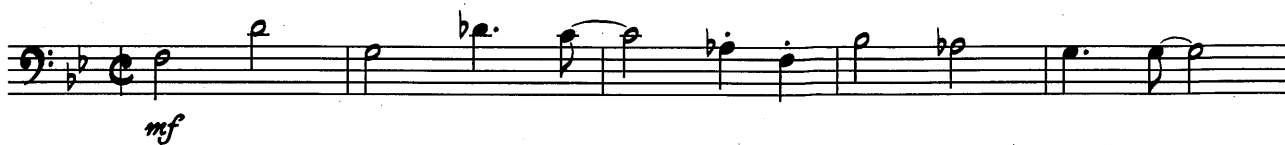


# THROTTLE UP!

Trombone

Composed and Arranged by  
**CHRIS SHARP** (ASCAP)

Fast swing  $\text{♩} = 144$



# THROTTLE UP!...p. 2 Trombone

Musical staff 1, starting with measure 33. The staff is in bass clef with a key signature of one flat (B-flat). It begins with a dotted quarter note, followed by eighth notes, and a half note. Measure 33 is marked with a box containing the number 33. The staff continues with quarter notes, eighth notes, and a half note.

Musical staff 2, continuing the piece. It features a series of eighth notes with slurs, quarter notes, and eighth notes with slurs.

Musical staff 3, continuing the piece. It features a series of eighth notes with slurs, quarter notes, and eighth notes with slurs.

Musical staff 4, continuing the piece. Measure 49 is marked with a box containing the number 49. The staff features eighth notes with slurs, quarter notes, and eighth notes with slurs.

Musical staff 5, continuing the piece. It features eighth notes with slurs, quarter notes, and eighth notes with slurs.

Musical staff 6, continuing the piece. It features quarter notes, eighth notes, and a series of eighth notes with slurs.

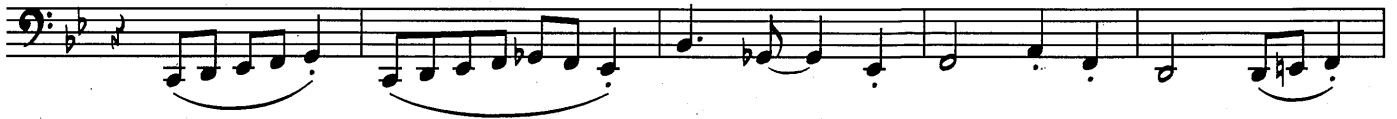
Musical staff 7, continuing the piece. It features eighth notes with slurs, quarter notes, eighth notes with slurs, and quarter notes. The staff ends with a double bar line.

# THROTTLE UP!

## Bass Trombone

Composed and Arranged by  
**CHRIS SHARP** (ASCAP)

Fast swing  $\text{♩} = 144$



17

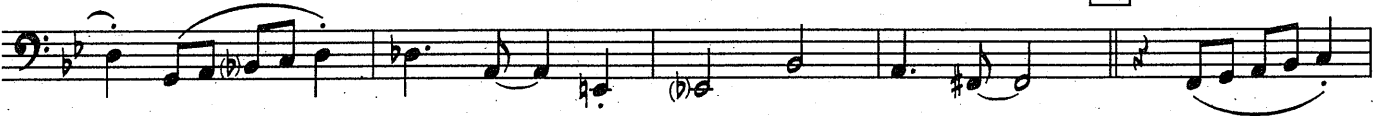


# THROTTLE UP!...p. 2 Trombone

33



49



# THROTTLE UP!

## Bass

Composed and Arranged by  
**CHRIS SHARP** (ASCAP)

Fast swing  $\text{♩} = 144$

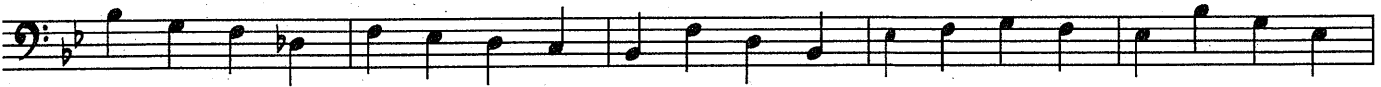
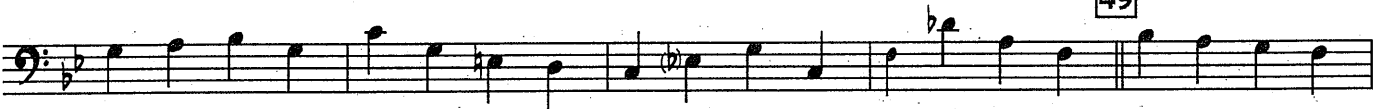


THROTTLE UP!...p. 2 Bass

33



49



# THROTTLE UP!

Piano

Composed and Arranged by  
**CHRIS SHARP** (ASCAP)

Fast swing  $\text{♩} = 144$

$B^{b9}$ 
 $F_{AUG}^9$ 
 $F_{MI}^7$ 
 $B^{b13}$ 
 $E^{bMA}7$ 
 $E^{b9}$ 
 $A^{b13}$

The first system of piano accompaniment consists of seven measures. The key signature has two flats (B-flat and E-flat). The time signature is common time (C). The music is written for piano with a mezzo-forte (mf) dynamic. The notes are: Measure 1: B-flat, E-flat, G, B-flat; Measure 2: F, A, C, G; Measure 3: F, A, C, G; Measure 4: B-flat, D, F, A; Measure 5: E-flat, G, B-flat, D; Measure 6: E-flat, G, B-flat, D; Measure 7: A, C, E, G.

$A^{b9}$ 
 $B^{b9}$ 
 $D_{MI}^9$ 
 $C^9$ 
 $C_{MI}^9$ 
 $D_{MI}^7$ 
 $G^{7(b9)}$ 
 $C_{MI}^9$ 
 $F^{7(b9)}$

The second system of piano accompaniment consists of eight measures. The key signature has two flats. The notes are: Measure 1: A, C, E, G; Measure 2: B-flat, D, F, A; Measure 3: D, F, A, C; Measure 4: C, E, G, B-flat; Measure 5: C, E, G, B-flat; Measure 6: D, F, A, C; Measure 7: D, F, A, C; Measure 8: F, A, C, G.

17  $B^{b9}$   $F_{AUG}^9$   $F_{MI}^7$   $B^{b13}$   $E^{bMA}7$   $E^{b9}$   $A^{b13}$   $A^{b9}$

The third system of piano accompaniment starts at measure 17 and consists of eight measures. The key signature has two flats. The notes are: Measure 17: B-flat, E-flat, G, B-flat; Measure 18: F, A, C, G; Measure 19: F, A, C, G; Measure 20: B-flat, D, F, A; Measure 21: E-flat, G, B-flat, D; Measure 22: E-flat, G, B-flat, D; Measure 23: A, C, E, G; Measure 24: A, C, E, G.

$B^{b9}$ 
 $D_{MI}^{7(b5)}$ 
 $C^9$ 
 $C_{MI}^9$ 
 $F^{7(b9)}$ 
 $B^{b9}$ 
 $A^{b9(b13)}$

The fourth system of piano accompaniment consists of seven measures. The key signature has two flats. The notes are: Measure 25: B-flat, E-flat, G, B-flat; Measure 26: D, F, A, C; Measure 27: C, E, G, B-flat; Measure 28: C, E, G, B-flat; Measure 29: F, A, C, G; Measure 30: B-flat, D, F, A; Measure 31: A, C, E, G.

THROTTLE UP!...p. 2 Piano

33 C#mi<sup>9</sup> F#9(b13) B<sup>b</sup>/<sub>9</sub> Bmi<sup>7</sup> E<sup>7</sup>(b9) Ama<sup>9</sup>

Ami<sup>7</sup> D<sup>9</sup> G<sup>b</sup>/<sub>9</sub> Gmi<sup>9</sup> C<sup>13</sup>(b9) Cmi<sup>9</sup>

F<sup>7</sup>(b9) 49 B<sup>b</sup>/<sub>9</sub> FAUG<sup>9</sup> Fmi<sup>7</sup> B<sup>b</sup>13 E<sup>b</sup>MA<sup>7</sup> E<sup>b</sup>/<sub>9</sub> A<sup>b</sup>13

A<sup>b</sup>9 B<sup>b</sup>/<sub>9</sub> Dmi<sup>7</sup>(b5) C<sup>9</sup> Cmi<sup>9</sup> F<sup>7</sup>(b9) B<sup>b</sup>/<sub>9</sub>



# THROTTLE UP!

## Guitar

Composed and Arranged by  
**CHRIS SHARP** (ASCAP)

Fast swing  $\text{♩} = 144$

$B^{b6/9}$   $F^{AUG^9}$   $F^{MI^7}$   $B^{b13}$

*mf*

$E^bMA^7$   $E^{b6/9}$   $A^{b13}$   $A^{b9}$   $B^{b6/9}$

$D^{MI^9}$   $C^9$   $\%$   $C^{MI^9}$   $D^{MI^7}$   $G^{7(b9)}$

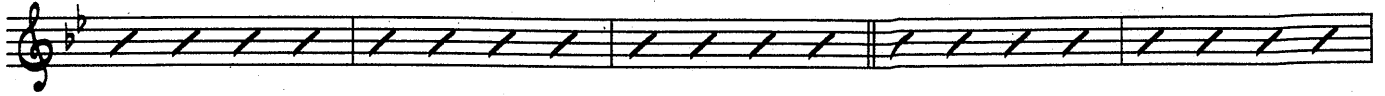
$C^{MI^9}$   $F^{7(b9)}$   $\boxed{17}$   $B^{b6/9}$   $F^{AUG^9}$   $F^{MI^7}$

$B^{b13}$   $E^bMA^7$   $E^{b6/9}$   $A^{b13}$   $A^{b9}$

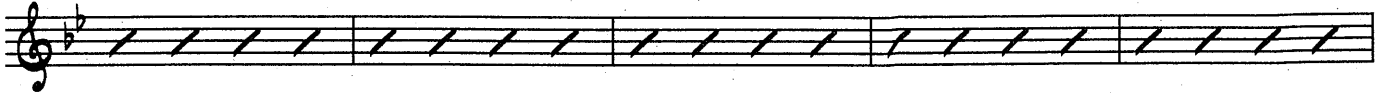
$B^{b6/9}$   $D^{MI^7(b5)}$   $C^9$   $\%$   $C^{MI^9}$

# THROTTLE UP!...p. 2 Guitar

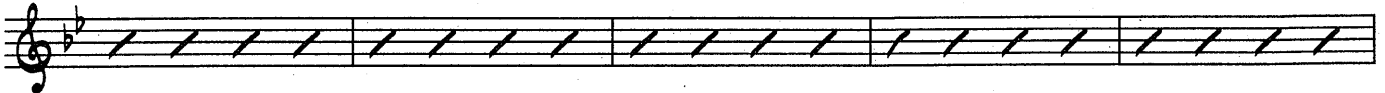
D<sup>MI</sup>7 G<sup>7(b9)</sup> C<sup>MI</sup>9 A<sup>b9(b13)</sup> 33 C<sup>#MI</sup>9 F<sup>#9(b13)</sup>



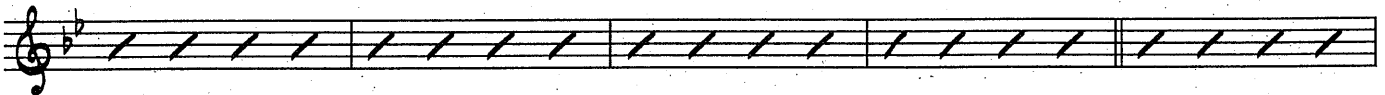
B<sup>b6/9</sup> / B<sup>MI</sup>7 E<sup>7(b9)</sup> A<sup>MA</sup>9



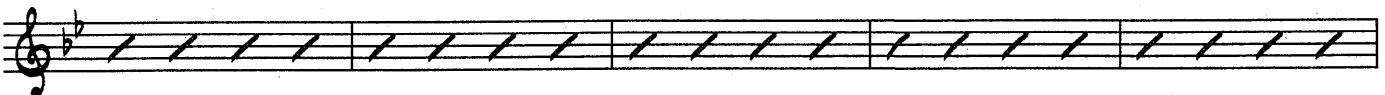
/ A<sup>MI</sup>7 D<sup>9</sup> G<sup>b6/9</sup> /




G<sup>MI</sup>9 C<sup>13(b9)</sup> C<sup>MI</sup>9 F<sup>7(b9/b13)</sup> 49 B<sup>b6/9</sup>



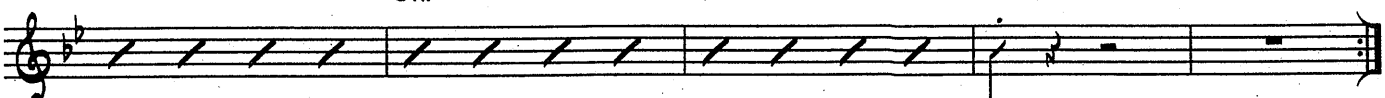
F<sup>AUG</sup>9 F<sup>MI</sup>7 B<sup>b13</sup> E<sup>bMA</sup>7 E<sup>b6/9</sup>



A<sup>b13</sup> A<sup>b9</sup> B<sup>b6/9</sup> D<sup>MI</sup>7(b5) C<sup>9</sup>



/ C<sup>MI</sup>9 F<sup>7(b9)</sup> B<sup>b6/9</sup>



# THROTTLE UP!

## Drum Set

Composed and Arranged by  
**CHRIS SHARP** (ASCAP)

Fast swing  $\text{♩} = 144$

# THROTTLE UP!...p. 2 Drum Set

33

Drum notation for measures 33-34, featuring eighth and sixteenth notes with stems and 'x' marks above them.

Diagonal slash notation for measures 35-36.

Diagonal slash notation for measures 37-38.

49

Drum notation for measures 49-50, featuring eighth and sixteenth notes with stems and 'x' marks above them.

Diagonal slash notation for measures 51-52.

Diagonal slash notation for measures 53-54.

Drum notation for measures 55-56, concluding with a double bar line and repeat dots.